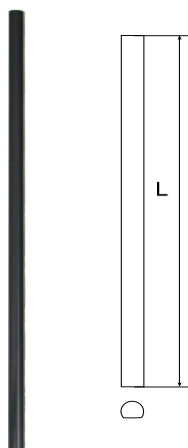




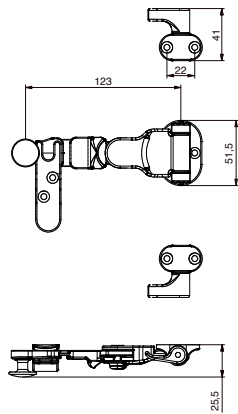
## Serie Europa

[www.torbel.it](http://www.torbel.it)





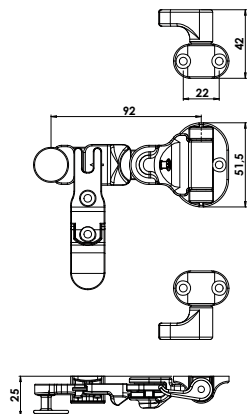
Asta per spagnoletta D. 9 mm

Cod.		L	
5012080	9005	1200	10
5014080	9005	1400	10
5016080	9005	1600	10
5018080	9005	1800	10
5024080	9005	2400	10
5026080	9005	2600	10
5030080	9005	3000	10
5016000	PRIMER	1600	10
5024000	PRIMER	2400	10
5030000	PRIMER	3000	10





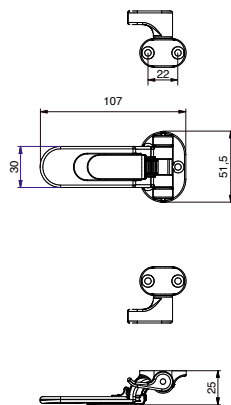
Kit spagnoletta a leva  
1/2 ante c/sic. aut.

Cod.		
6101080	9005	10
6101000	PRIMER	10





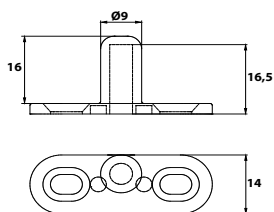
Kit spagnoletta ridotta  
1/2 ante c/sic. aut.

Cod.		
6102080	9005	10
6102000	PRIMER	10



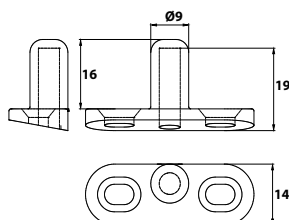
Kit spagnoletta a scatto  
1/2 ante

Cod.		
6105080	9005	10
6105000	PRIMER	10



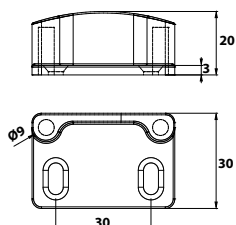
**Perno su piastra zama**

Cod.		
6131080	<b>9005</b>	40



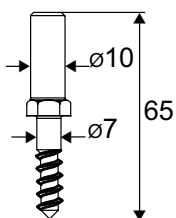
**Perno su piastra inclinata zama**

Cod.		
6132080	<b>9005</b>	40



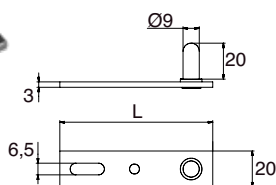
**Dispositivo di arresto zama**

Cod.		
6133080	<b>9005</b>	20



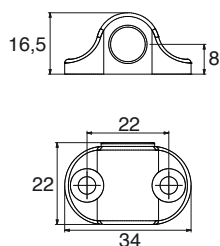
**Perno ad avvitare dritto**

Cod.		
0720054		50



**Perno su piastra lunga regolabile**

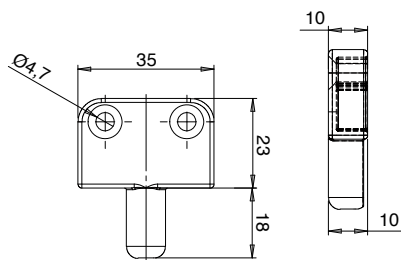
Cod.		L	
6134080	<b>9005</b>	85	20
6134080110	<b>9005</b>	110	20
6134080160	<b>9005</b>	160	20



**Guida asta**

Cod.		
6119080	<b>9005</b>	40
6119000	<b>GREZZO</b>	40

Boccola nylon integrata.

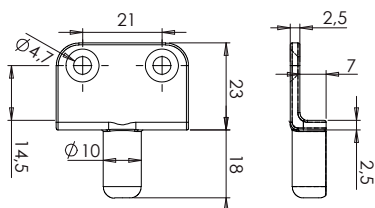


**Perno su piastra p/telaio**

Cod.



6136080 **9005** 20

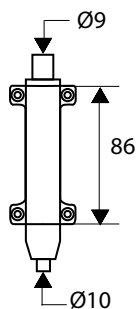


**Perno su piastra p/telaio non a filo**

Cod.



6137080 **9005** 20



**Convertitore zama Ø10**

Cod.



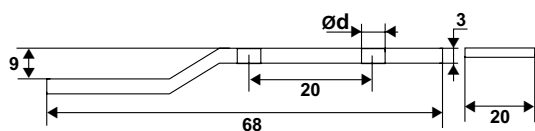
**Alto**

6150080 **9005** 10

**Basso**

6151080 **9005** 10

Le nozioni di alto e basso si intendono per montaggio della spagnoletta a destra.

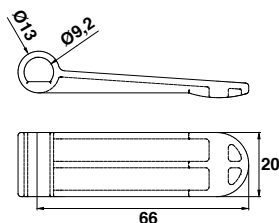


**Aggancio di richiamo**

Cod.



6130080 **9005** 20

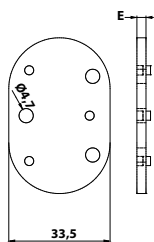


**Bandiera di battuta per 2° anta**

Cod.



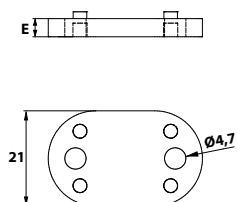
6113080 **9005** 20



**Spessore per supporto maniglia**

Cod.		E	
6140080		3	40
6141080		4	40

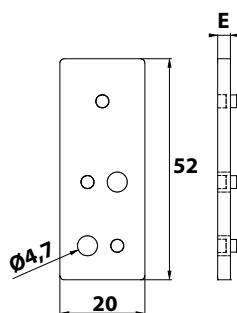
Sovrapponibili.



**Spessore per guida asta**

Cod.		E	
6142080		3	40
6143080		4	40

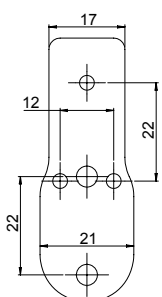
Sovrapponibili.



**Spessore per incontro maniglia**

Cod.		E	
6144080		3	40
6145080		4	40

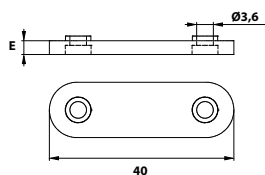
Sovrapponibili.



**Spessore per incontro maniglia ridotta**

Cod.		E	
6148080		3	40
6149080		4	40

Sovrapponibili.

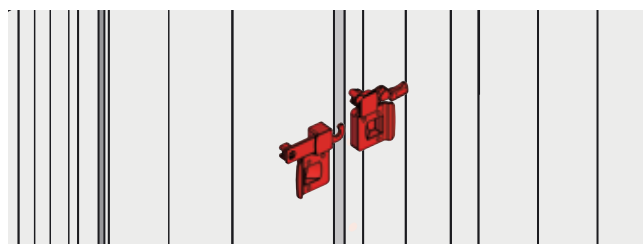
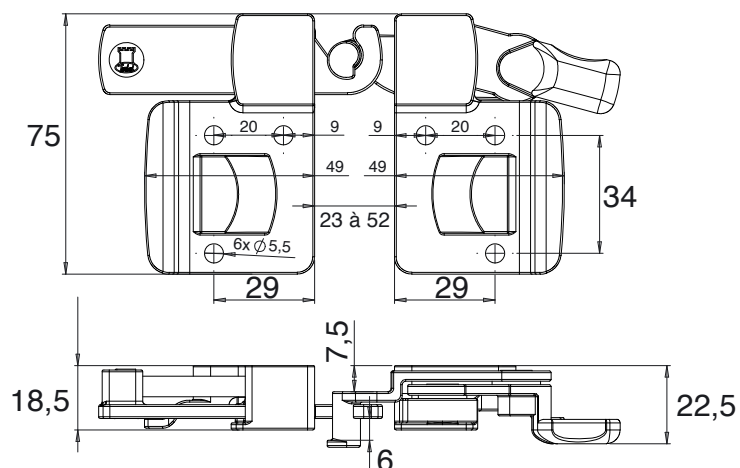


**Spessore per convertitore**

Cod.		E	
6146080		3	40
6147080		4	40

Sovrapponibili.

# Maniglietta centrale per scorrevoli e ripieghevoli



## Vantaggi

Consente di chiudere in sicurezza le persiane scorrevoli e ripieghevoli.

Piastre modellate per facilitare la presa in apertura e chiusura.



Leva ergonomica che facilita il blocco/sblocco.

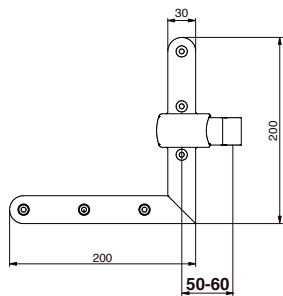
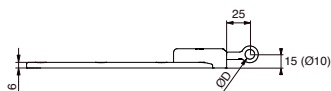
Ideale per tutti i tipi di profilo grazie all'interasse regolabile.

Registrazione di precisione per la messa in tensione delle ante dopo la posa.

Si può verniciare a RAL senza smontarla (per la finitura grezza).

## Maniglietta per scorrevoli 2A

Cod.		
B025541J	<b>9005</b>	5
B025541Q	<b>9016</b>	5
B0255410	<b>GREZZO</b>	5



**Squadro Micro Regolazione Laterale  
Nodo corto**

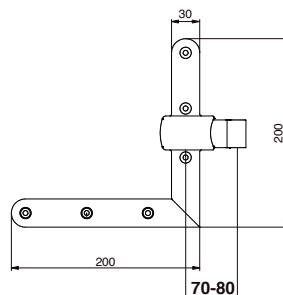
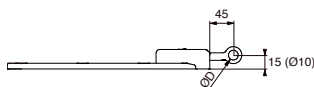
Cod.		ØD	
------	--	----	--

**Basso dx, alto sx**

3800080	<b>9005</b>	10	12
3900080	<b>9005</b>	12	12

**Basso sx, alto dx**

3801080	<b>9005</b>	10	12
3901080	<b>9005</b>	12	12



**Squadro Micro Regolazione Laterale  
Nodo lungo**

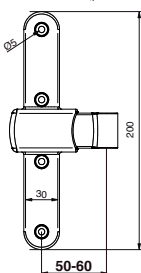
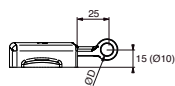
Cod.		ØD	
------	--	----	--

**Basso dx, alto sx**

3810080	<b>9005</b>	10	12
3910080	<b>9005</b>	12	12

**Basso sx, alto dx**

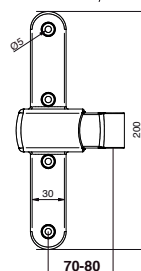
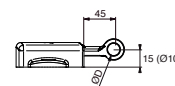
3811080	<b>9005</b>	10	12
3911080	<b>9005</b>	12	12



**T Micro Regolazione Laterale  
Nodo corto**

Cod.		ØD	
------	--	----	--

4101080	<b>9005</b>	10	12
4201080	<b>9005</b>	12	12

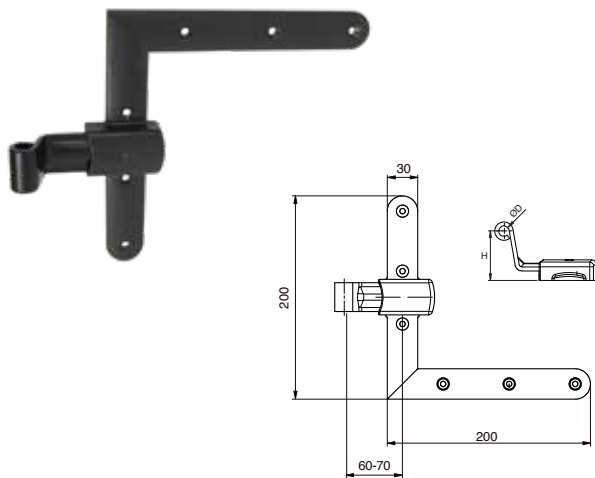


**T Micro Regolazione Laterale  
Nodo lungo**

Cod.		ØD	
------	--	----	--

411080	<b>9005</b>	10	12
421080	<b>9005</b>	12	12





**Squadro ad angolo Micro Regolazione Laterale**

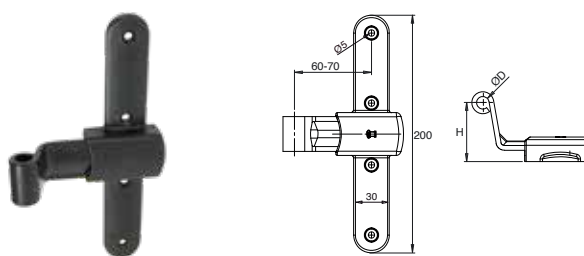
Cod.		ØD	H	
------	--	----	---	--

**Basso dx, alto sx**

3804080	9005	10	35	12
3802080	9005	10	50	12
3904080	9005	12	35	12
3902080	9005	12	50	12

**Basso sx, alto dx**

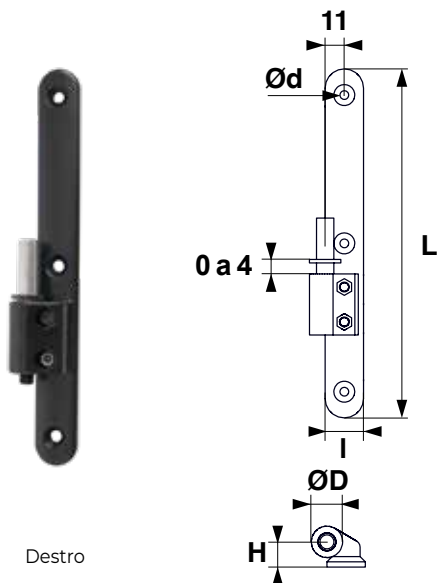
3805080	9005	10	35	12
3803080	9005	10	50	12
3905080	9005	12	35	12
3903080	9005	12	50	12



**T ad angolo Micro Regolazione Laterale**

Cod.		ØD	H	
------	--	----	---	--

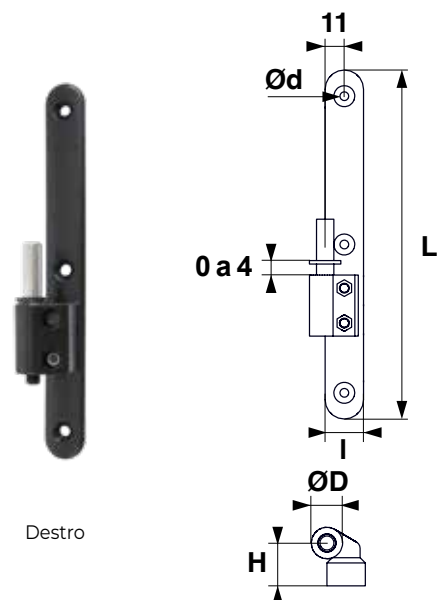
4103080	9005	10	35	12
4102080	9005	10	50	12
4203080	9005	12	35	12
4202080	9005	12	50	12



Destro

Cardine su piastra stondata zama MRV

Cod.		L	I	H	ØD	Ød	
<b>Destro</b>							
1351080	<b>9005</b>	200	22	15	Ø 10	Ø 5	24
<b>Sinistro</b>							
1352080	<b>9005</b>	200	22	15	Ø 10	Ø 5	24



Destro

Cardine su piastra stondata zama sinistro MRV

Cod.		L	I	H	ØD	Ød	
1360080	<b>9005</b>	200	22	18	Ø 10	Ø 5	24
1361080	<b>9005</b>	200	22	23	Ø 10	Ø 5	24
1362080	<b>9005</b>	200	22	25	Ø 10	Ø 5	24
1363080	<b>9005</b>	200	22	30	Ø 10	Ø 5	24
1366080	<b>9005</b>	200	22	33	Ø 10	Ø 5	24
1367080	<b>9005</b>	200	22	35	Ø 10	Ø 5	24
1365080	<b>9005</b>	200	22	50	Ø 10	Ø 5	24
1369080	<b>9005</b>	200	22	65	Ø 10	Ø 5	24

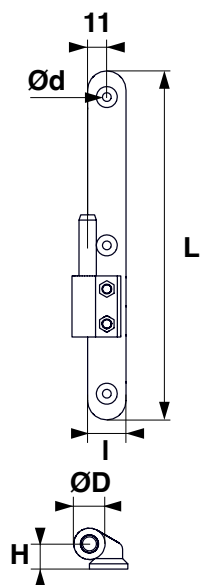
Cardine su piastra stondata zama destro MRV

Cod.		L	I	H	ØD	Ød	
1370080	<b>9005</b>	200	22	18	Ø 10	Ø 5	24
1371080	<b>9005</b>	200	22	23	Ø 10	Ø 5	24
1372080	<b>9005</b>	200	22	25	Ø 10	Ø 5	24
1373080	<b>9005</b>	200	22	30	Ø 10	Ø 5	24
1376080	<b>9005</b>	200	22	33	Ø 10	Ø 5	24
1377080	<b>9005</b>	200	22	35	Ø 10	Ø 5	24
1375080	<b>9005</b>	200	22	50	Ø 10	Ø 5	24
1379080	<b>9005</b>	200	22	65	Ø 10	Ø 5	24

## Cardine su piastra stondata zama fisso



Destro

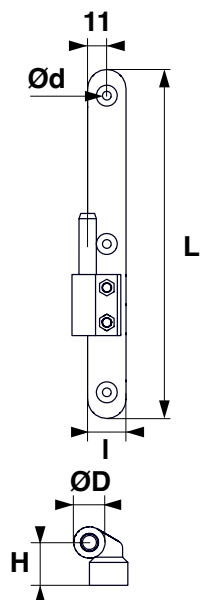


### Cardine su piastra stondata zama fisso

Cod.		L	I	H	ØD	Ød	
<b>Destro</b>							
1251080	<b>9005</b>	200	22	15	Ø 10	Ø 5	24
<b>Sinistro</b>							
1252080	<b>9005</b>	200	22	15	Ø 10	Ø 5	24



Destro



### Cardine su piastra stondata zama sinistro fisso

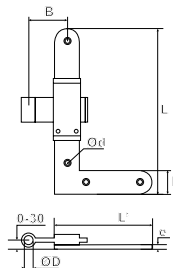
Cod.		L	I	H	ØD	Ød	
1260080	<b>9005</b>	200	22	18	Ø 10	Ø 5	24
1261080	<b>9005</b>	200	22	23	Ø 10	Ø 5	24
1262080	<b>9005</b>	200	22	25	Ø 10	Ø 5	24
1263080	<b>9005</b>	200	22	30	Ø 10	Ø 5	24
1266080	<b>9005</b>	200	22	33	Ø 10	Ø 5	24
1267080	<b>9005</b>	200	22	35	Ø 10	Ø 5	24
1265080	<b>9005</b>	200	22	50	Ø 10	Ø 5	24
1269080	<b>9005</b>	200	22	65	Ø 10	Ø 5	24

### Cardine su piastra stondata zama destro fisso

Cod.		L	I	H	ØD	Ød	
1270080	<b>9005</b>	200	22	18	Ø 10	Ø 5	24
1271080	<b>9005</b>	200	22	23	Ø 10	Ø 5	24
1272080	<b>9005</b>	200	22	25	Ø 10	Ø 5	24
1273080	<b>9005</b>	200	22	30	Ø 10	Ø 5	24
1276080	<b>9005</b>	200	22	33	Ø 10	Ø 5	24
1277080	<b>9005</b>	200	22	35	Ø 10	Ø 5	24
1275080	<b>9005</b>	200	22	50	Ø 10	Ø 5	24
1279080	<b>9005</b>	200	22	65	Ø 10	Ø 5	24



Basso sx



Squadro regolabile zama

Cod.		L	L'	I	B	e	ØD	Ød	
------	--	---	----	---	---	---	----	----	--

Basso sx, alto dx

3600080	<b>9005</b>	200	115	30	35-55	6	Ø10	Ø5	12
3600020	<b>9016</b>	200	115	30	35-55	6	Ø10	Ø5	12
3600000	<b>GREZZO</b>	200	115	30	35-55	6	Ø10	Ø5	12

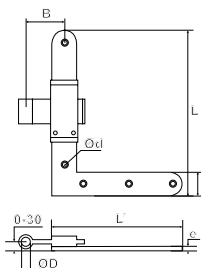
Basso dx, alto sx

3601080	<b>9005</b>	200	115	30	35-55	6	Ø10	Ø5	12
3601020	<b>9016</b>	200	115	30	35-55	6	Ø10	Ø5	12
3601000	<b>GREZZO</b>	200	115	30	35-55	6	Ø10	Ø5	12

Ideale per alluminio. Persiana semplice.



Basso sx



Squadro regolabile zama

Cod.		L	L'	I	B	e	ØD	Ød	
------	--	---	----	---	---	---	----	----	--

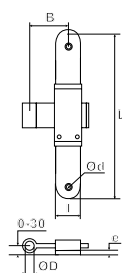
Basso sx, alto dx

3700080	<b>9005</b>	200	200	30	35-55	6	Ø10	Ø5	12
3700020	<b>9016</b>	200	200	30	35-55	6	Ø10	Ø5	12
3700000	<b>GREZZO</b>	200	200	30	35-55	6	Ø10	Ø5	12

Basso dx, alto sx

3701080	<b>9005</b>	200	200	30	35-55	6	Ø10	Ø5	12
3701020	<b>9016</b>	200	200	30	35-55	6	Ø10	Ø5	12
3701000	<b>GREZZO</b>	200	200	30	35-55	6	Ø10	Ø5	12

Ideale per PVC. Persiana semplice.



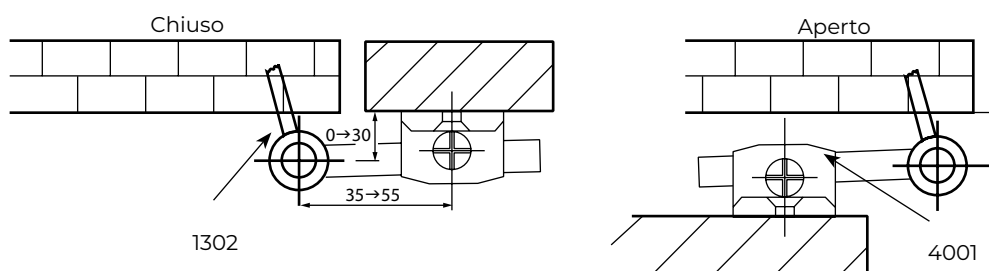
T regolabile zama

Cod.		L	I	B	e	ØD	Ød	
------	--	---	---	---	---	----	----	--

4001080	<b>9005</b>	200	30	35-55	6	Ø10	Ø5	12
4001020	<b>9016</b>	200	30	35-55	6	Ø10	Ø5	12
4001000	<b>GREZZO</b>	200	30	35-55	6	Ø10	Ø5	12

Ideale per alluminio e PVC. Persiana doppia.

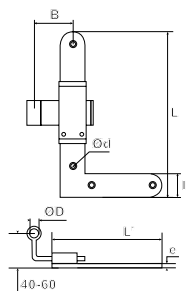
Schemi di posizionamento



1/2 Squadro regolabile con cardine da murare



Basso sx



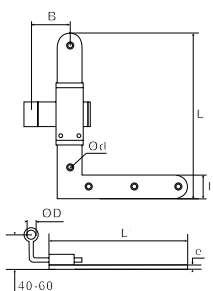
Squadro ad angolo regolabile zama

Cod.		L	L'	I	B	e	ØD	Ød	
<b>Basso sx, alto dx</b>									
3602080	<b>9005</b>	200	115	30	40-60	6	Ø10	Ø5	12
3602020	<b>9016</b>	200	115	30	40-60	6	Ø10	Ø5	12
3602000	<b>GREZZO</b>	200	115	30	40-60	6	Ø10	Ø5	12
<b>Basso dx, alto sx</b>									
3603080	<b>9005</b>	200	115	30	40-60	6	Ø10	Ø5	12
3603020	<b>9016</b>	200	115	30	40-60	6	Ø10	Ø5	12
3603000	<b>GREZZO</b>	200	115	30	40-60	6	Ø10	Ø5	12

Ideale per alluminio. Persiana doppia.



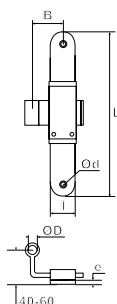
Basso sx



Squadro ad angolo regolabile zama

Cod.		L	L'	I	B	e	ØD	Ød	
<b>Basso sx, alto dx</b>									
3702080	<b>9005</b>	200	200	30	40-60	6	Ø10	Ø5	12
3702020	<b>9016</b>	200	200	30	40-60	6	Ø10	Ø5	12
3702000	<b>GREZZO</b>	200	200	30	40-60	6	Ø10	Ø5	12
<b>Basso dx, alto sx</b>									
3703080	<b>9005</b>	200	200	30	40-60	6	Ø10	Ø5	12
3703020	<b>9016</b>	200	200	30	40-60	6	Ø10	Ø5	12
3703000	<b>GREZZO</b>	200	200	30	40-60	6	Ø10	Ø5	12

Ideale per PVC. Persiana semplice.

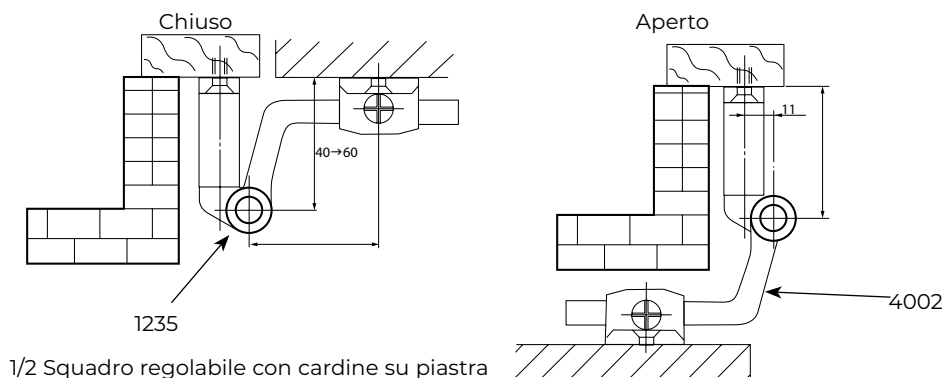


T ad angolo regolabile zama

Cod.		L	I	B	e	ØD	Ød	
4002080	<b>9005</b>	200	30	40-60	6	Ø10	Ø5	12
4002020	<b>9016</b>	200	30	40-60	6	Ø10	Ø5	12
4002000	<b>GREZZO</b>	200	30	40-60	6	Ø10	Ø5	12

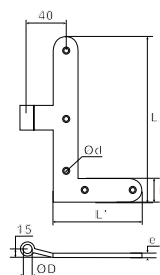
Ideale per alluminio e PVC. Persiana doppia.

Schemi di posizionamento





Basso sx



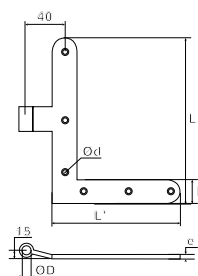
Squadro fisso zama

Cod.		L	L'	l	e	ØD	Ød	
<b>Basso sx, alto dx</b>								
3607080	9005	200	115	30	6	Ø10	Ø5	12
3607020	9016	200	115	30	6	Ø10	Ø5	12
3607000	GREZZO	200	115	30	6	Ø10	Ø5	12
<b>Basso dx, alto sx</b>								
3606080	9005	200	115	30	6	Ø10	Ø5	12
3606020	9016	200	115	30	6	Ø10	Ø5	12
3606000	GREZZO	200	115	30	6	Ø10	Ø5	12

Ideale per alluminio. Persiana semplice.



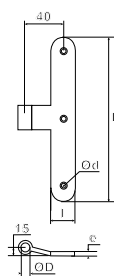
Basso sx



Squadro fisso zama

Cod.		L	L'	l	e	ØD	Ød	
<b>Basso sx, alto dx</b>								
3707080	9005	200	200	30	6	Ø10	Ø5	12
3707020	9016	200	200	30	6	Ø10	Ø5	12
3707000	GREZZO	200	200	30	6	Ø10	Ø5	12
<b>Basso dx, alto sx</b>								
3706080	9005	200	200	30	6	Ø10	Ø5	12
3706020	9016	200	200	30	6	Ø10	Ø5	12
3706000	GREZZO	200	200	30	6	Ø10	Ø5	12

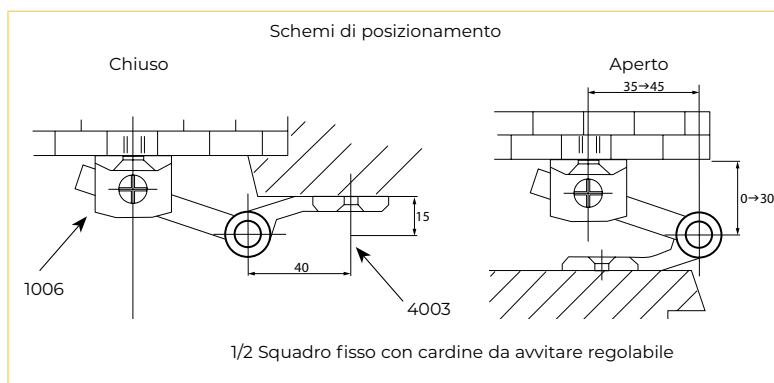
Ideale per PVC. Persiana semplice.



T fisso zama

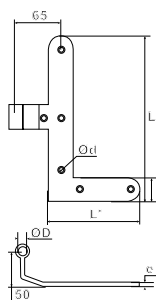
Cod.		L	l	e	ØD	Ød	
4003080	9005	200	30	6	Ø10	Ø5	12
4003020	9016	200	30	6	Ø10	Ø5	12
4003000	GREZZO	200	30	6	Ø10	Ø5	12

Ideale per alluminio e PVC. Persiana semplice.

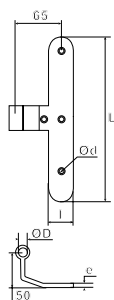
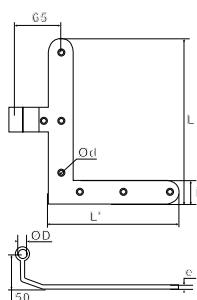




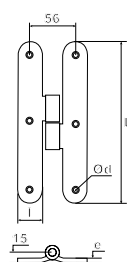
Basso sx



Basso sx



Destra



### Squadro ad angolo fisso zama

Cod.		L	l	H	e	ØD	Ød	
------	--	---	---	---	---	----	----	--

#### Basso sx, alto dx

3609080	<b>9005</b>	200	115	30	6	Ø10	Ø5	12
3609020	<b>9016</b>	200	115	30	6	Ø10	Ø5	12
3609000	<b>GREZZO</b>	200	115	30	6	Ø10	Ø5	12

#### Basso dx, alto sx

3608080	<b>9005</b>	200	115	30	6	Ø10	Ø5	12
3608020	<b>9016</b>	200	115	30	6	Ø10	Ø5	12
3608000	<b>GREZZO</b>	200	115	30	6	Ø10	Ø5	12

Ideale per alluminio. Persiana doppia.

### Squadro ad angolo fisso zama

Cod.		L	l	H	e	ØD	Ød	
------	--	---	---	---	---	----	----	--

#### Basso sx, alto dx

3709080	<b>9005</b>	200	200	30	6	Ø10	Ø5	12
3709020	<b>9016</b>	200	200	30	6	Ø10	Ø5	12
3709000	<b>GREZZO</b>	200	200	30	6	Ø10	Ø5	12

#### Basso dx, alto sx

3708080	<b>9005</b>	200	200	30	6	Ø10	Ø5	12
3708020	<b>9016</b>	200	200	30	6	Ø10	Ø5	12
3708000	<b>GREZZO</b>	200	200	30	6	Ø10	Ø5	12

Ideale per PVC. Persiana doppia.

### T ad angolo fisso zama

Cod.		L	l	e	ØD	Ød	
------	--	---	---	---	----	----	--

4004080	<b>9005</b>	200	30	6	Ø10	Ø5	12
4004020	<b>9016</b>	200	30	6	Ø10	Ø5	12
4004000	<b>GREZZO</b>	200	30	6	Ø10	Ø5	12

Ideale per alluminio e PVC. Persiana doppia.

### Cerniera a H zama destra

Cod.		L	l	e	Ød	
------	--	---	---	---	----	--

2510080	<b>9005</b>	200	30	6	Ø5	12
2510020	<b>9016</b>	200	30	6	Ø5	12
2510000	<b>GREZZO</b>	200	30	6	Ø5	12

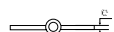
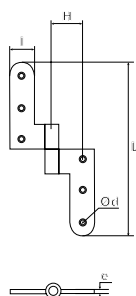
### Cerniera a H zama sinistra

Cod.		L	l	e	Ød	
------	--	---	---	---	----	--

2511080	<b>9005</b>	200	30	6	Ø5	12
2511020	<b>9016</b>	200	30	6	Ø5	12
2511000	<b>GREZZO</b>	200	30	6	Ø5	12



Sinistra

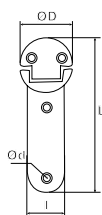


**Cerniera a libro zama sinistra**

Cod.		L	I	H	e	Ød	
2520080	<b>9005</b>	200	25	35	4	Ø 5	12
2520020	<b>9016</b>	200	25	35	4	Ø 5	12
2520000	<b>GREZZO</b>	200	25	35	4	Ø 5	12

**Cerniera a libro zama destra**

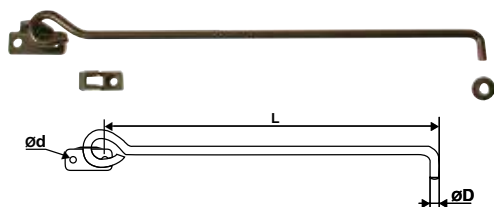
Cod.		L	I	H	e	Ød	
2521080	<b>9005</b>	200	25	35	4	Ø 5	12
2521020	<b>9016</b>	200	25	35	4	Ø 5	12
2521000	<b>GREZZO</b>	200	25	35	4	Ø 5	12



**Cerniera alla genovese zama**

Cod.		L	I	ØD	Ød	
2500080	<b>9005</b>	103,5	25	Ø 45	Ø 5	24
2500020	<b>9016</b>	103,5	25	Ø 45	Ø 5	24
2500000	<b>GREZZO</b>	103,5	25	Ø 45	Ø 5	24

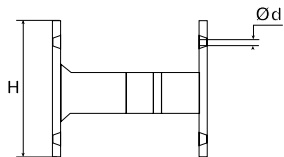
**Puntaletto**







**Puntaletto D6 su piastrina forata**

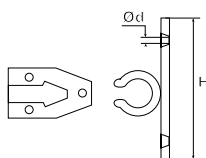
Cod.		L	ØD	Ød	
92AL30J	<b>9005</b>	270	Ø 6	Ø 5	10





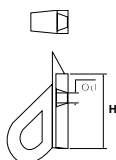
Fermo a pinza nylon

Cod.		H	Ød	
94PAF19		44	Ø 4,3	100
94PAF29		44	Ø 4,3	100



Fermo a pinza nylon

Cod.		H	Ød	
94PAF59		44	Ø 4,3	100



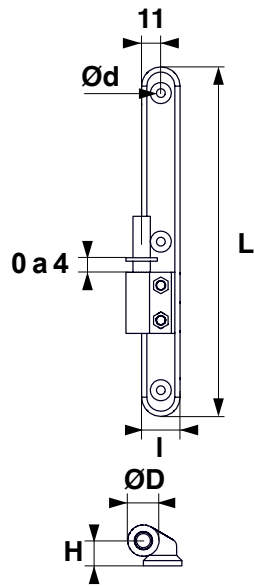
Cricchetto nylon

Cod.		H	Ød	
94PAF89		32	Ø 4,3	50

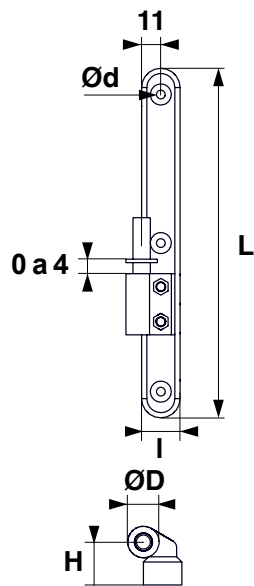
## Cardini su piastra Micro Regolazione Verticale (MRV)



Destro



Destro



### Cardine su piastra zama MRV

Cod.		L	I	H	ØD	Ød	
<b>Destro</b>							
1321080	<b>9005</b>	200	22	15	Ø10	Ø5	24
1321020	<b>9016</b>	200	22	15	Ø10	Ø5	24
1321000	<b>GREZZO</b>	200	22	15	Ø10	Ø5	24
<b>Sinistro</b>							
1322080	<b>9005</b>	200	22	15	Ø10	Ø5	24
1322020	<b>9016</b>	200	22	15	Ø10	Ø5	24
1322000	<b>GREZZO</b>	200	22	15	Ø10	Ø5	24

### Cardine su piastra zama MRV sinistro

Cod.		L	I	H	ØD	Ød	
1330080	<b>9005</b>	200	22	18	Ø10	Ø5	24
1331080	<b>9005</b>	200	22	23	Ø10	Ø5	24
1332080	<b>9005</b>	200	22	25	Ø10	Ø5	24
1333080	<b>9005</b>	200	22	30	Ø10	Ø5	24
1336080	<b>9005</b>	200	22	33	Ø10	Ø5	24
1337080	<b>9005</b>	200	22	35	Ø10	Ø5	24
1335080	<b>9005</b>	200	22	50	Ø10	Ø5	24
1339080	<b>9005</b>	200	22	65	Ø10	Ø5	24
1330020	<b>9016</b>	200	22	18	Ø10	Ø5	24
1331020	<b>9016</b>	200	22	23	Ø10	Ø5	24
1332020	<b>9016</b>	200	22	25	Ø10	Ø5	24
1333020	<b>9016</b>	200	22	30	Ø10	Ø5	24
1336020	<b>9016</b>	200	22	33	Ø10	Ø5	24
1335020	<b>9016</b>	200	22	50	Ø10	Ø5	24
1339020	<b>9016</b>	200	22	65	Ø10	Ø5	24
1330000	<b>GREZZO</b>	200	22	18	Ø10	Ø5	24
1331000	<b>GREZZO</b>	200	22	23	Ø10	Ø5	24
1332000	<b>GREZZO</b>	200	22	25	Ø10	Ø5	24
1333000	<b>GREZZO</b>	200	22	30	Ø10	Ø5	24
1336000	<b>GREZZO</b>	200	22	33	Ø10	Ø5	24
1335000	<b>GREZZO</b>	200	22	50	Ø10	Ø5	24
1339000	<b>GREZZO</b>	200	22	65	Ø10	Ø5	24

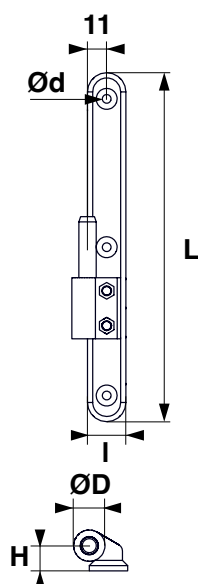
### Cardine su piastra zama MRV destro

Cod.		L	I	H	ØD	Ød	
1340080	<b>9005</b>	200	22	18	Ø10	Ø5	24
1341080	<b>9005</b>	200	22	23	Ø10	Ø5	24
1342080	<b>9005</b>	200	22	25	Ø10	Ø5	24
1343080	<b>9005</b>	200	22	30	Ø10	Ø5	24
1346080	<b>9005</b>	200	22	33	Ø10	Ø5	24
1347080	<b>9005</b>	200	22	35	Ø10	Ø5	24
1345080	<b>9005</b>	200	22	50	Ø10	Ø5	24
1349080	<b>9005</b>	200	22	65	Ø10	Ø5	24
1340020	<b>9016</b>	200	22	18	Ø10	Ø5	24
1341020	<b>9016</b>	200	22	23	Ø10	Ø5	24
1342020	<b>9016</b>	200	22	25	Ø10	Ø5	24
1343020	<b>9016</b>	200	22	30	Ø10	Ø5	24
1346020	<b>9016</b>	200	22	33	Ø10	Ø5	24
1345020	<b>9016</b>	200	22	50	Ø10	Ø5	24
1349020	<b>9016</b>	200	22	65	Ø10	Ø5	24
1340000	<b>GREZZO</b>	200	22	18	Ø10	Ø5	24
1341000	<b>GREZZO</b>	200	22	23	Ø10	Ø5	24
1342000	<b>GREZZO</b>	200	22	25	Ø10	Ø5	24
1343000	<b>GREZZO</b>	200	22	30	Ø10	Ø5	24
1346000	<b>GREZZO</b>	200	22	33	Ø10	Ø5	24
1345000	<b>GREZZO</b>	200	22	50	Ø10	Ø5	24
1349000	<b>GREZZO</b>	200	22	65	Ø10	Ø5	24

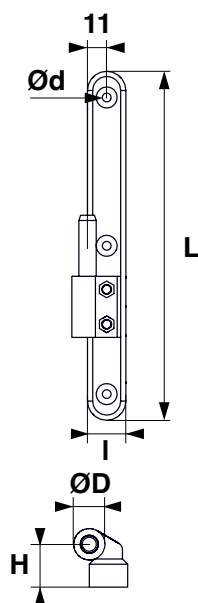
## Cardini su piastra



Destro



Destro



### Cardine su piastra zama

Cod.		L	I	H	ØD	Ød	
<b>Destro</b>							
1221080	<b>9005</b>	200	22	15	Ø10	Ø5	24
1221020	<b>9016</b>	200	22	15	Ø10	Ø5	24
1221000	<b>GREZZO</b>	200	22	15	Ø10	Ø5	24
<b>Sinistro</b>							
1222080	<b>9005</b>	200	22	15	Ø10	Ø5	24
1222020	<b>9016</b>	200	22	15	Ø10	Ø5	24
1222000	<b>GREZZO</b>	200	22	15	Ø10	Ø5	24

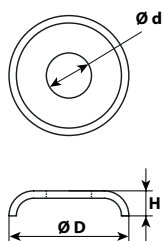
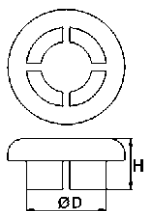
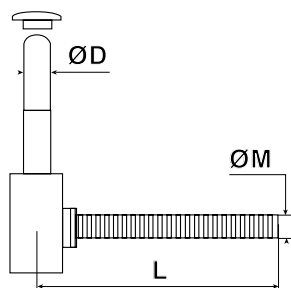
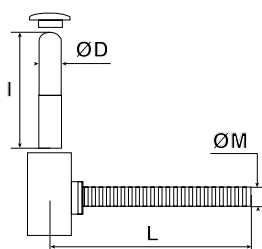
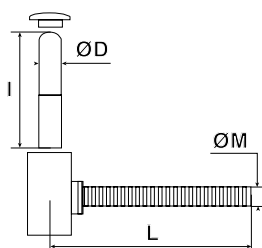
### Cardine su piastra zama sinistro

Cod.		L	I	H	ØD	Ød	
1230080	<b>9005</b>	200	22	18	Ø10	Ø5	24
1231080	<b>9005</b>	200	22	23	Ø10	Ø5	24
1232080	<b>9005</b>	200	22	25	Ø10	Ø5	24
1233080	<b>9005</b>	200	22	30	Ø10	Ø5	24
1236080	<b>9005</b>	200	22	33	Ø10	Ø5	24
1237080	<b>9005</b>	200	22	35	Ø10	Ø5	24
1235080	<b>9005</b>	200	22	50	Ø10	Ø5	24
1239080	<b>9005</b>	200	22	65	Ø10	Ø5	24
1230020	<b>9016</b>	200	22	18	Ø10	Ø5	24
1231020	<b>9016</b>	200	22	23	Ø10	Ø5	24
1232020	<b>9016</b>	200	22	25	Ø10	Ø5	24
1233020	<b>9016</b>	200	22	30	Ø10	Ø5	24
1236020	<b>9016</b>	200	22	33	Ø10	Ø5	24
1235020	<b>9016</b>	200	22	50	Ø10	Ø5	24
1239020	<b>9016</b>	200	22	65	Ø10	Ø5	24
1230000	<b>GREZZO</b>	200	22	18	Ø10	Ø5	24
1231000	<b>GREZZO</b>	200	22	23	Ø10	Ø5	24
1232000	<b>GREZZO</b>	200	22	25	Ø10	Ø5	24
1233000	<b>GREZZO</b>	200	22	30	Ø10	Ø5	24
1236000	<b>GREZZO</b>	200	22	33	Ø10	Ø5	24
1235000	<b>GREZZO</b>	200	22	50	Ø10	Ø5	24
1239000	<b>GREZZO</b>	200	22	65	Ø10	Ø5	24

### Cardine su piastra zama destro

Cod.		L	I	H	ØD	Ød	
1240080	<b>9005</b>	200	22	18	Ø10	Ø5	24
1241080	<b>9005</b>	200	22	23	Ø10	Ø5	24
1242080	<b>9005</b>	200	22	25	Ø10	Ø5	24
1243080	<b>9005</b>	200	22	30	Ø10	Ø5	24
1246080	<b>9005</b>	200	22	33	Ø10	Ø5	24
1247080	<b>9005</b>	200	22	35	Ø10	Ø5	24
1245080	<b>9005</b>	200	22	50	Ø10	Ø5	24
1249080	<b>9005</b>	200	22	65	Ø10	Ø5	24
1240020	<b>9016</b>	200	22	18	Ø10	Ø5	24
1241020	<b>9016</b>	200	22	23	Ø10	Ø5	24
1242020	<b>9016</b>	200	22	25	Ø10	Ø5	24
1243020	<b>9016</b>	200	22	30	Ø10	Ø5	24
1246020	<b>9016</b>	200	22	33	Ø10	Ø5	24
1245020	<b>9016</b>	200	22	50	Ø10	Ø5	24
1249020	<b>9016</b>	200	22	65	Ø10	Ø5	24
1240000	<b>GREZZO</b>	200	22	18	Ø10	Ø5	24
1241000	<b>GREZZO</b>	200	22	23	Ø10	Ø5	24
1242000	<b>GREZZO</b>	200	22	25	Ø10	Ø5	24
1243000	<b>GREZZO</b>	200	22	30	Ø10	Ø5	24
1246000	<b>GREZZO</b>	200	22	33	Ø10	Ø5	24
1245000	<b>GREZZO</b>	200	22	50	Ø10	Ø5	24
1249000	<b>GREZZO</b>	200	22	65	Ø10	Ø5	24

Perno inox.



Cardine a tassello per resina chimica

Cod.		L	I	ØD	ØM	
1402080	9005	90	48	Ø10	Ø10	24
1402080120	9005	120	48	Ø10	Ø12	24
1402080140	9005	140	48	Ø10	Ø12	24

**Modello vite lunga p/ isolamento esterno**

1402080180	9005	180	48	Ø10	Ø12	24
------------	------	-----	----	-----	-----	----

Perno anti-usura.

Cardine a tassello tutto filetto

Cod.		L	I	ØD	ØM	
1602080		70	48	Ø10	Ø12	24

Cardine per resina chimica D12 mm

Cod.		L	ØM	ØD	
1502080	9005	90	12	Ø12	24
1502080120	9005	120	12	Ø12	24
1502080140	9005	140	12	Ø12	24
1502080180	9005	180	12	Ø12	24
1502080240	9005	240	16	Ø12	24

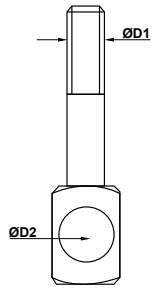
- Antisfilamento accidentale
- Boccola in nylon
- Rosetta di copertura
- Tappo di finitura
- Gambo M12
- Finitura zincato + verniciato

Tappo di protezione

Cod.		H	ØD	
2700080		7	Ø10	40
2701080		7	Ø12	40

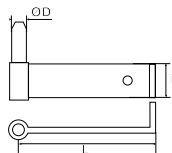
Rosetta di copertura

Cod.		H	ØD	Ød	
1402R1080		7	Ø30	Ø10	40
1402R1280		7	Ø30	Ø12	40



Dima per foro

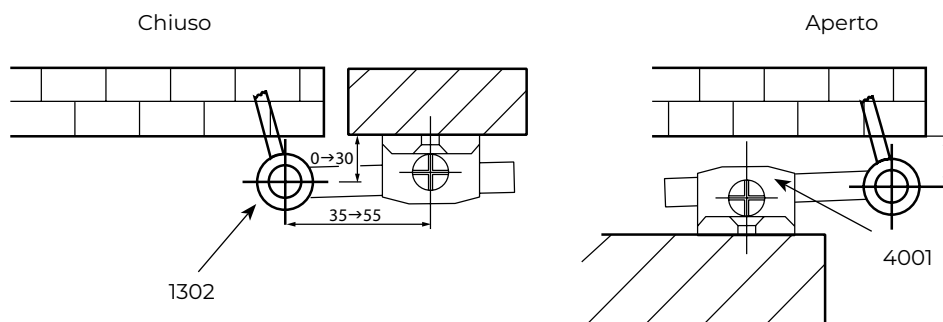
Cod.	Z.BIANCO	ØD1	ØD2	
99BS05	Z.BIANCO	Ø10	Ø16	1
99BS06	Z.BIANCO	Ø12	Ø16	1



Cardine a murare acciaio

Cod.	Z.BIANCO	L	I	ØD	
1302080	9005	133	30	Ø10	24

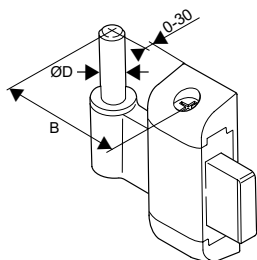
Schemi di posizionamento



1/2 Squadro regolabile con cardine da murare



Destro



Cardine regolabile zama

Cod.		B	ØD	
------	--	---	----	--

**Destro**

1005080	<b>9005</b>	35-55	Ø 10	12
1005020	<b>9016</b>	35-55	Ø 10	12
1005000	<b>GREZZO</b>	35-55	Ø 10	12

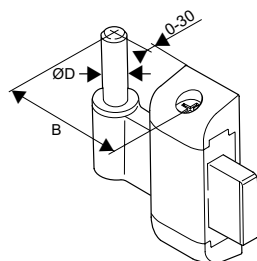
**Sinistro**

1006080	<b>9005</b>	35-55	Ø 10	12
1006020	<b>9016</b>	35-55	Ø 10	12
1006000	<b>GREZZO</b>	35-55	Ø 10	12

Perno inox. Persiana semplice.



Destro



Cardine regolabile ad angolo zama

Cod.		B	ØD	
------	--	---	----	--

**Destro**

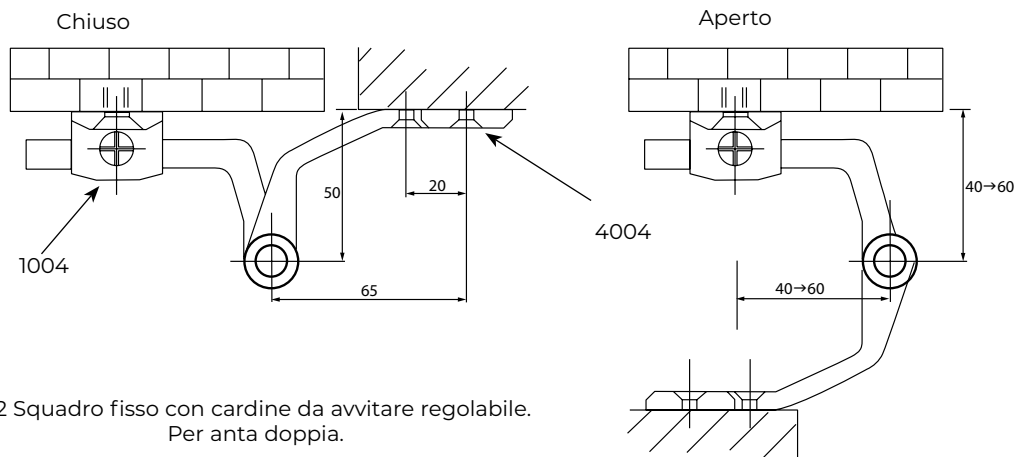
1003080	<b>9005</b>	40-60	Ø 10	12
1003020	<b>9016</b>	40-60	Ø 10	12
1003000	<b>GREZZO</b>	40-60	Ø 10	12

**Sinistro**

1004080	<b>9005</b>	40-60	Ø 10	12
1004020	<b>9016</b>	40-60	Ø 10	12
1004000	<b>GREZZO</b>	40-60	Ø 10	12

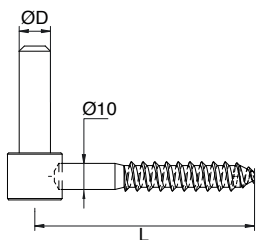
Persiana doppia.

Schemi di posizionamento



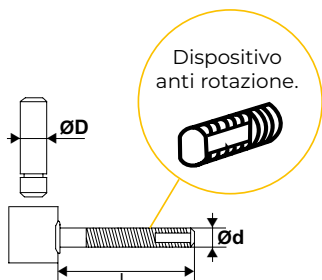
1/2 Squadro fisso con cardine da avvitare regolabile.  
Per anta doppia.

## Cardini clips



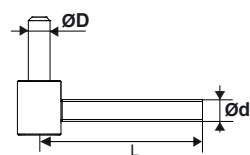
### Cardine vite legno

Cod.		L	ØD	
6110124		84	12	50
6110126		126	12	50
6110144		84	14	50
6110134		126	14	20
6110164		84	16	20



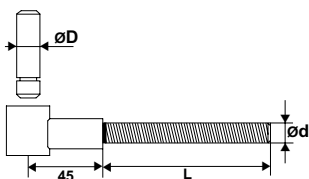
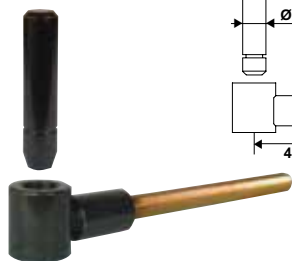
### Cardine clips acciaio

Cod.		L	ØD	Ød	
6117B26		70	Ø12	M10	30
6118B26		120	Ø12	M10	30
6117B22		70	Ø12	M10	30
6118B22		120	Ø12	M10	30



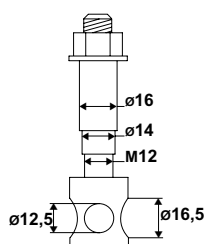
### Cardine clips acciaio

Cod.		L	ØD	Ød	
6117V26		90	Ø12	M12	30
6118V26		120	Ø12	M12	30



### Cardine clips acciaio gambo rinforzato

Cod.		L	ØD	Ød	
6117Y16		130	Ø12	M12	20



### Dima per posa universale

Cod.		
99BS011		1

